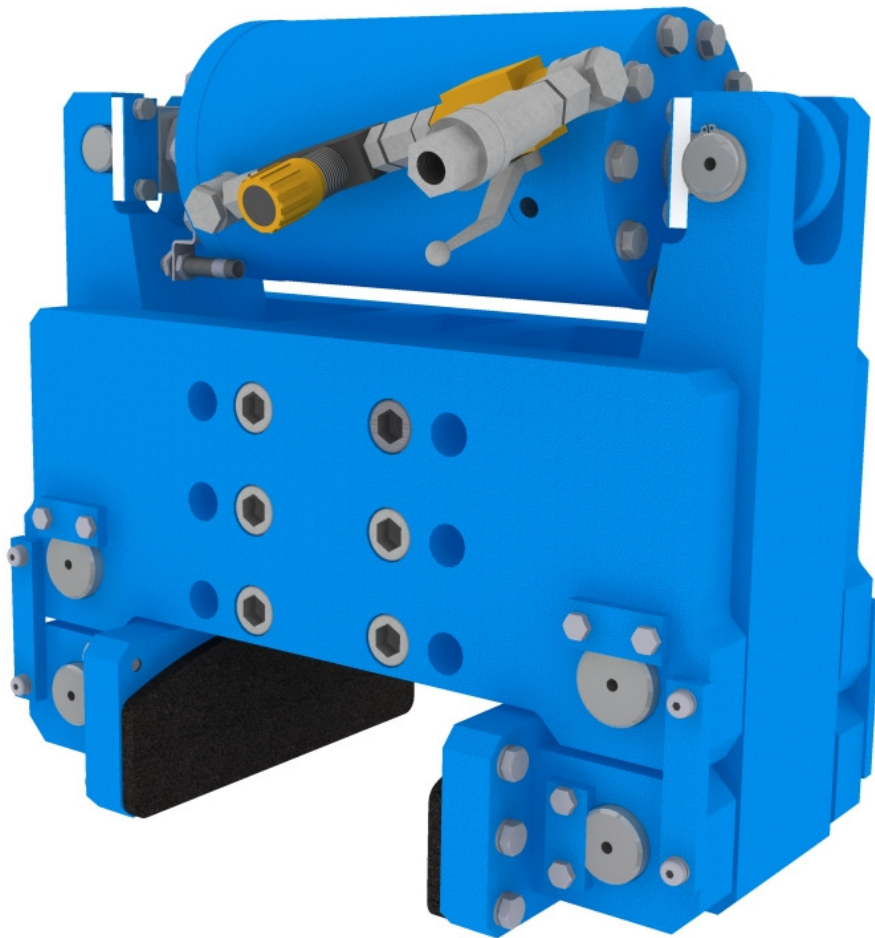


WHEEL BRAKE

DECEMBER 2008

CATALOGUE "FR"**Rima S.r.l.**

Via Fermi 255 – 21042 Caronno Pertusella (Va) Italy

Phone: +39 02 9650694 – Fax +39 02 9657860

E-mail: rima@rimagroup.com

WWW.RIMAGROUP.COM

FUNCTION

These brakes are devoted to parking utilization, securing the crane, in stowed condition, against the wind force, therefore, in their normal utilization they have to be closed when the crane is completely stopped. In emergency condition they can be operated also as dynamic brakes to stop the crane.

The braking shoes, pressing on the two sides of a wheel, are actuated by springs and released by hydraulic power.

In the standard execution, the brakes are designed for a few opening cycles per day, and a heavy duty execution is available under request, for particular applications where a high number opening cycles per day is needed.

MAIN DATA

Design braking force :

- FR8000 = 80 kN

- FR6000 = 60 kN

Friction coefficient = 0,4

Wheel diameter = min 500 mm ÷ MAX 1000 mm

Wheel width Wmin=170 mm ÷ WMAX=225 mm

Tolerances: ± 1 mm

Machined wheel surfaces: roughness = 3,2 µm

Opening time = 2 s (from the opening command to signal of brakes opened)

Closing time = 0,25 s

The above opening/closing times are calculated with 1 hydraulic unit feeding 4 brakes.

The braking force is calculated with a wear of the braking shoes of one mm respect to the thickness of new shoes.

This coefficient is depending upon the surface condition of the wheel, in presence of grease, lubricants, coal dust or similar, etc. the coefficient may decrease.

INSTALLATION

In most of cases it is foreseen the installation of a wheel brake on each idle wheel.

An hydraulic unit each four brakes is usually foreseen.

EXECUTION

The force exercised by brake on the two sides of wheel is given by disc springs.

The braking surfaces of the wheels must be machined with tolerances and roughness according to the above indications.

Braking shoes in friction material are hinged and easy replaceable.

The brake is opened by hydraulic cylinder positioned inside the brake by suitable hydraulic unit.

Piston rod of cylinder is in AISI 420 quenched and tempered and large-thickness chrome-plated.

Levers are in St 50

The brake is provided with side flange.

A limit-switch to signal the "brake open " is foreseen.

A 3/8 " connection hole (brake opening side brake) is foreseen, at this connection is also installed:

Ball valve necessary to keep the brake open (in pressure) even without hydraulic unit. More over it is necessary to open the quick coupling in pressure.

Quick coupling, necessary to connect the brake to hand pump. In this way it is possible, in emergency, to open the brake even if the hydraulic unit can not work.

The opposite hydraulic connection is also a 3/8 " hole that is used to keep the springs in oil-bath guaranteeing their efficiency and life.

FRICITION COEFFICIENT

The design braking force is calculated with a friction coefficient of 0,4.

This coefficient is depending upon the surface condition of the wheel, in presence of grease, lubricants, coal dust or similar, etc. the coefficient may decrease.

HYDRAULIC UNIT

It is suitable for sea-environment, completely assembled and wired to a keyboard.

The unit is including:

- 1,5 kW electric motor according to CEE rules, protection IP 55, tropical execution, V = 400 V ; 50 Hz. With anticondensation heater and thermistor protection.
- Gear pump 5 l/min.
- Electro-valve with coil easy replaceable, voltage according to client request.



Rima S.r.l.

Via Fermi 255 – 21042 Caronno Pertusella (Va) Italy

Phone: +39 02 9650694 – Fax +39 02 9657860

E-mail: rima@rimagroup.com



WWW.RIMAGROUP.COM

- Filter and control valves
- 1 Pressure switches for pressure control
- Pressure gauge complete with cock
- Manometer with cock
- Hand-pump for emergency opening with cock.

ENVIRONMENT DATA

- Temperature : 0 °C to + 40 °C
- Humidity : 100%
- Sea environment

PAINTING

With total thickness of 210 µ.

Sand-blast SA 2 1/2.

1.coat: inorganic zinc paint; thickness 70-80 µ.

2.coat: epoxy paint thickness 80-90 µ.

3.coat: polyurethane paint ; thickness 60-70 µ.

Final colour: According to customer request.

ELECTRICAL EQUIPMENT

It is usually foreseen by the customer with the electrical equipment of all the crane. We supply an electrical indicative diagram.

DOCUMENTATION

The documentation is worded according to EG (89/392/EWG) and Euro- EN 292-1/2; 1991 D rules.

- Use and Maintenance Manual
- Execution according to rules
- Over all dimension drawings
- Hydraulic and electric schemes
- Suggested spare part list
- Test Certificate
- Material certificated (EN 10204-2.1) for all main parts.

Documentation in Italian or English.

WARRANTY

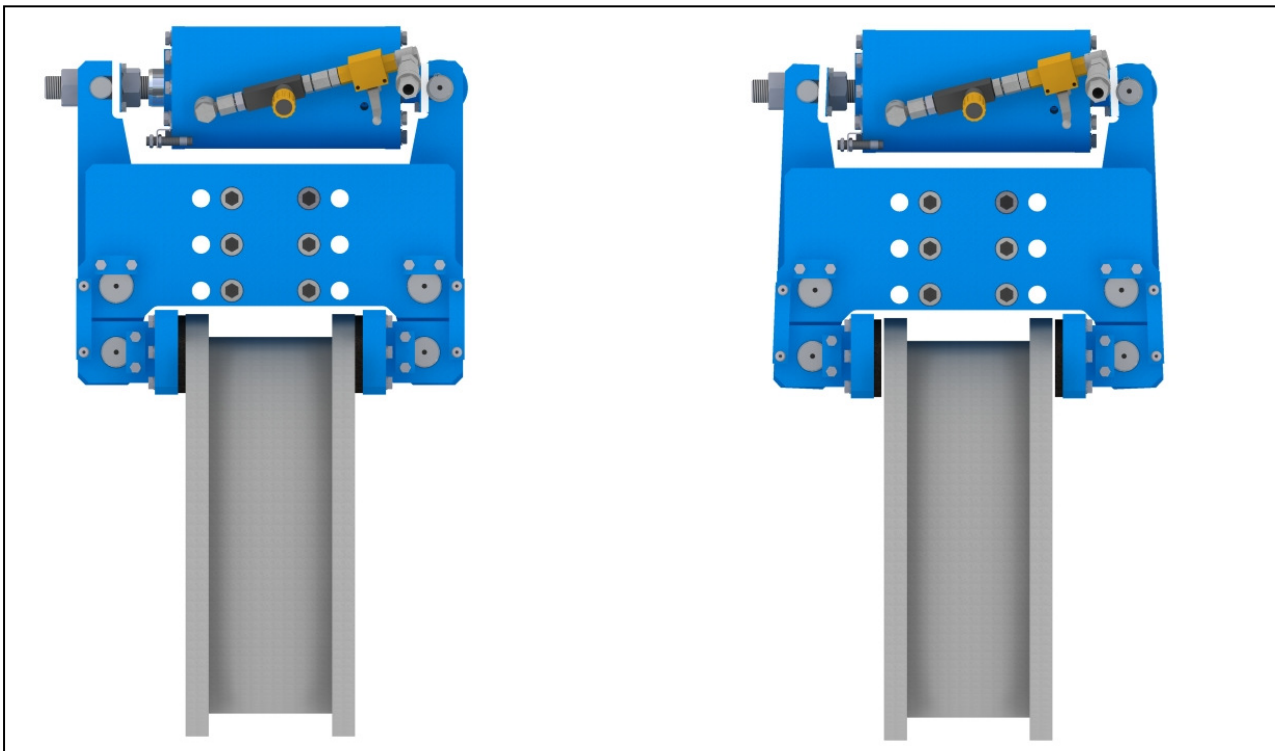
12/18 months

Warranty is subject to the following conditions:

A) The electric diagram is made accordingly to the scheme we suggest (SCE-FR-01) or is made accordingly to a scheme designed by client but in any case approved by us.

B) All maintenance procedures described in the manual provided with the supply are observed. In particular must be strictly observed the rules relevant to cleanliness and filters replacement.

In case one or more of above conditions should not be respected, the guarantee will be considered not valid.



Rima S.r.l.

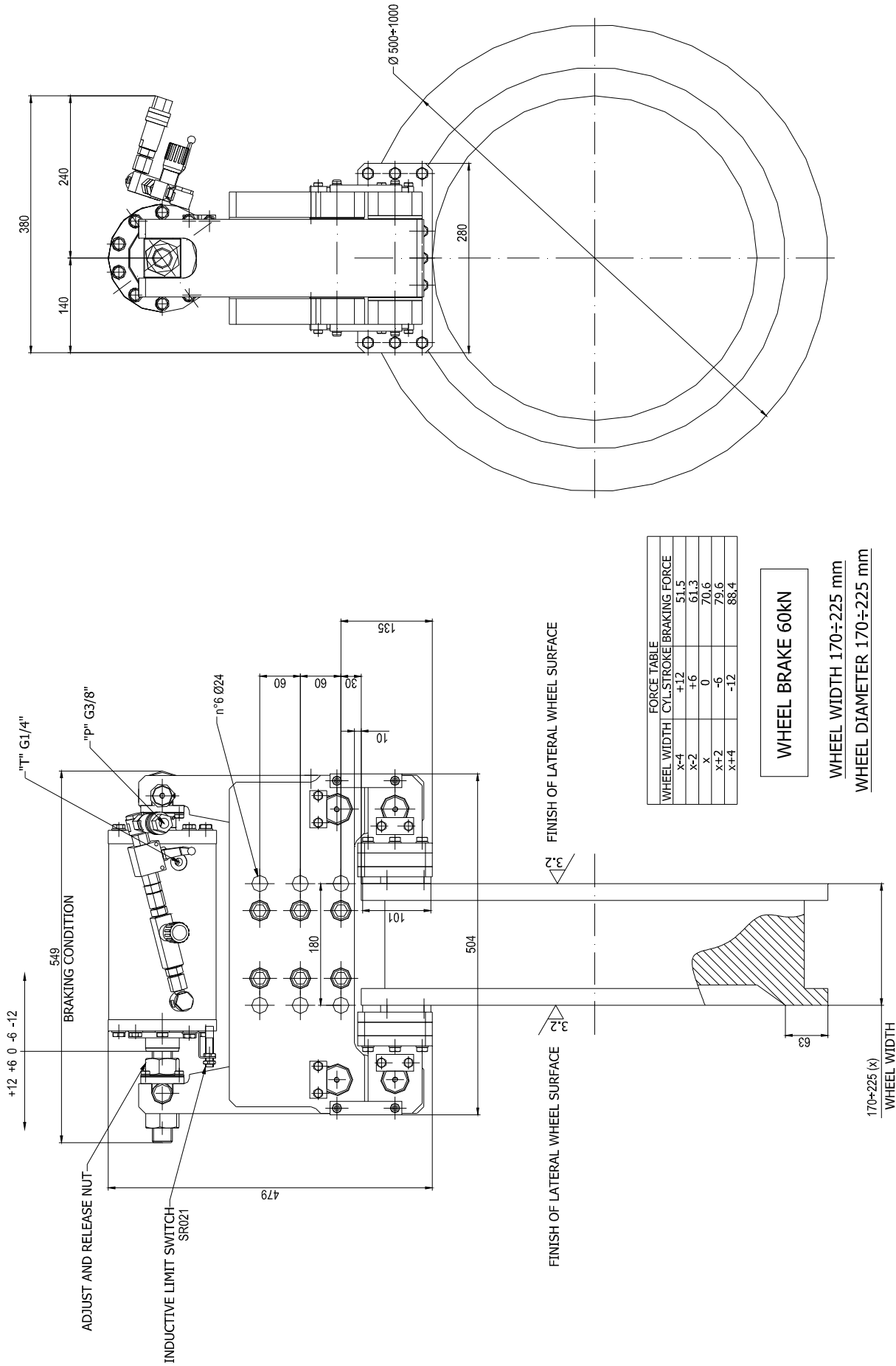
Via Fermi 255 – 21042 Caronno Pertusella (Va) Italy

Phone: +39 02 9650694 – Fax +39 02 9657860

E-mail: rima@rimagroup.com



WWW.RIMAGROUP.COM



FORCE TABLE	
WHEEL WIDTH	CYL. STROKE BRAKING FORCE
x-4	+12
x-2	+6
x	0
x+2	-6
x+4	-12

WHEEL BRAKE 60kN

WHEEL WIDTH 170÷225 mm

WHEEL DIAMETER 170÷225 mm

FINISH OF LATERAL WHEEL SURFACE

FINISH OF LATERAL WHEEL SURFACE

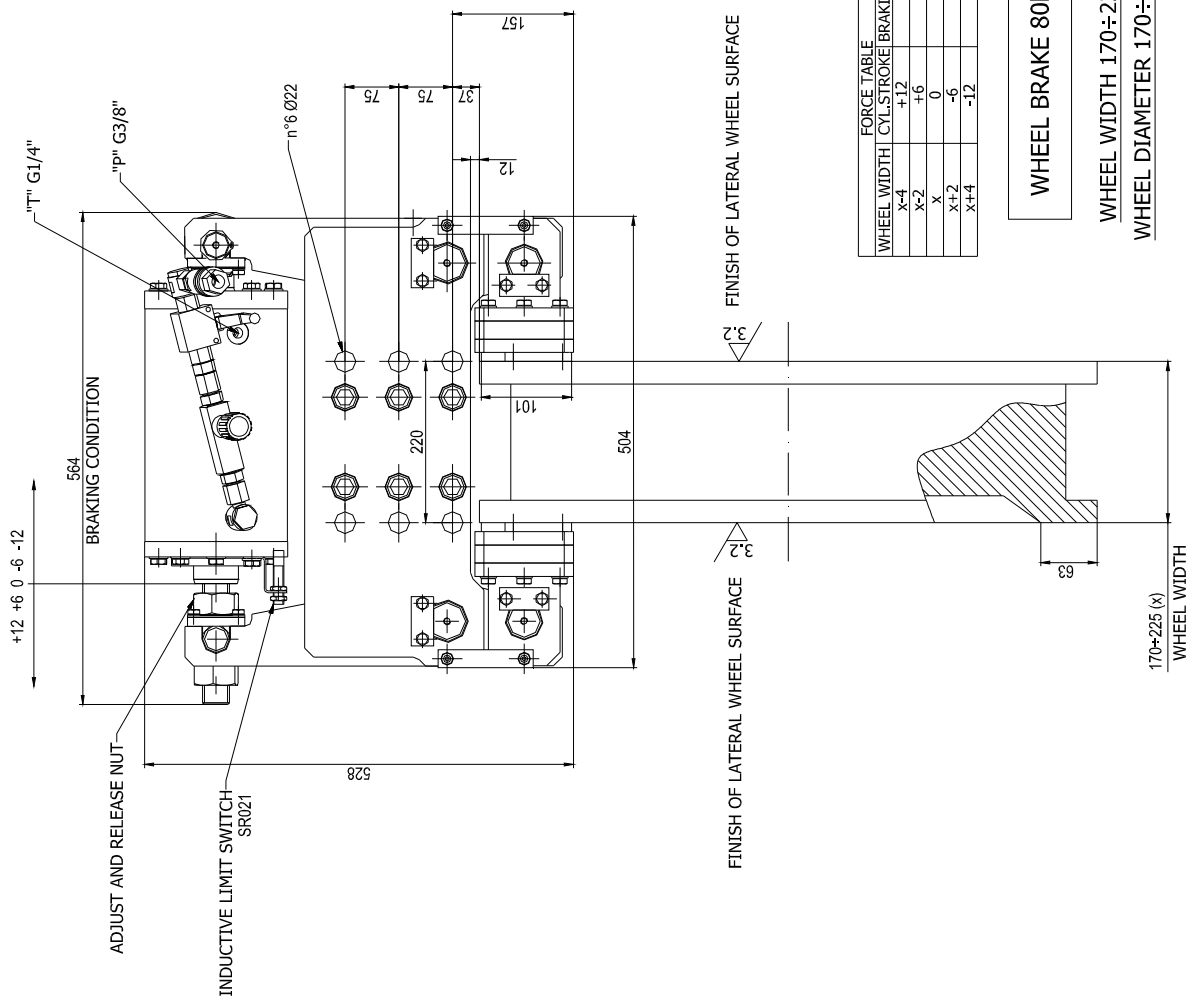
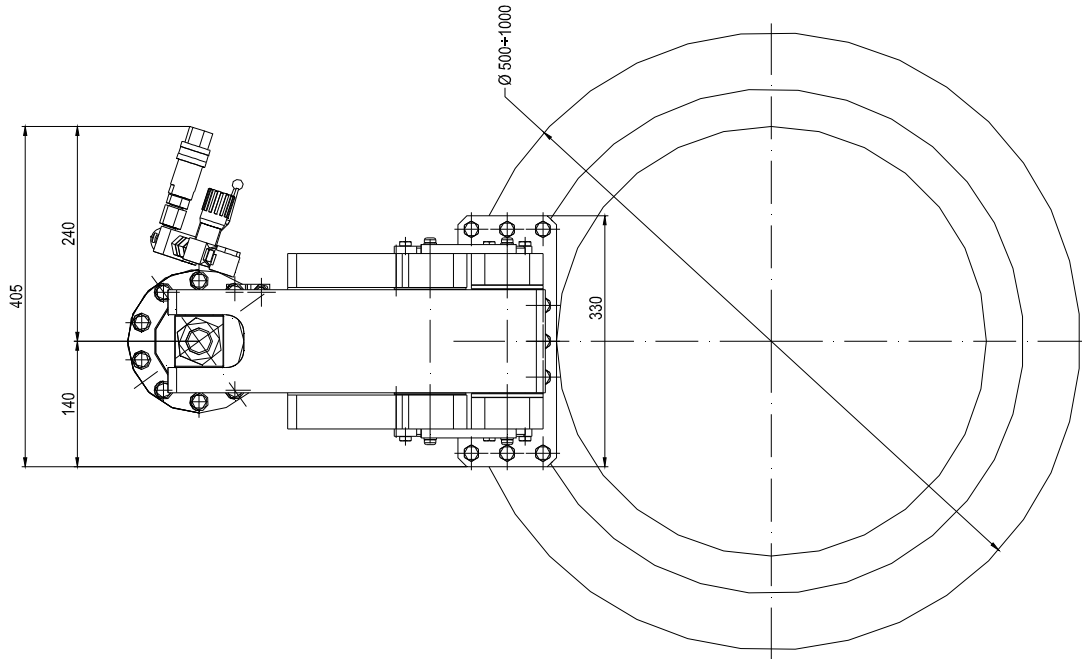
170÷225 (x)
WHEEL WIDTH



Rima S.r.l.
Via Fermi 255 – 21042 Caronno Pertusella (Va) Italy
Phone: +39 02 9650694 – Fax +39 02 9657860
E-mail: rima@rimagroup.com



WWW.RIMAGROUP.COM



FORCE TABLE	
WHEEL WIDTH	CYL. STROKE BRAKING FORCE
X-4	44,4
+12	82,6
+6	118,8
X	153,3
X+2	189,9
-6	
-12	

WHEEL BRAKE 80kN

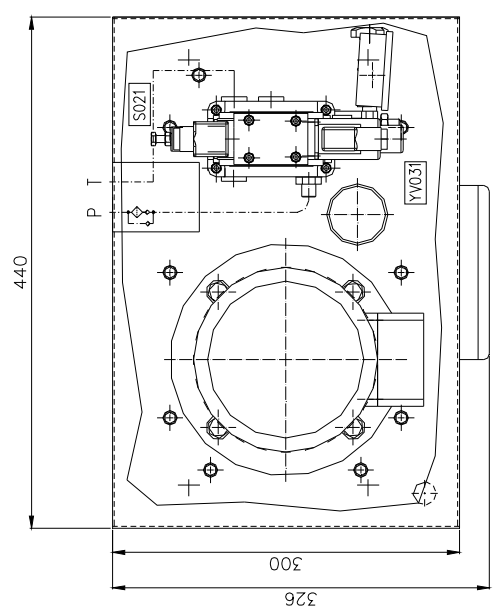
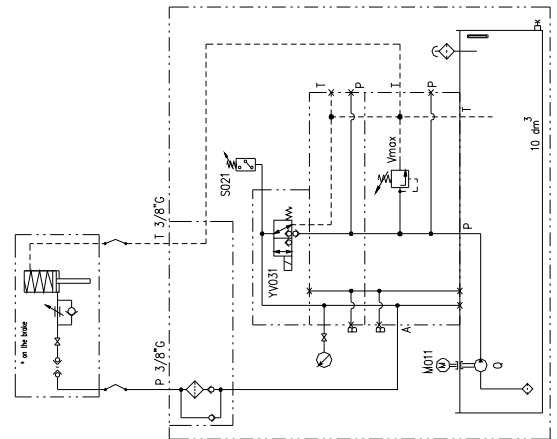
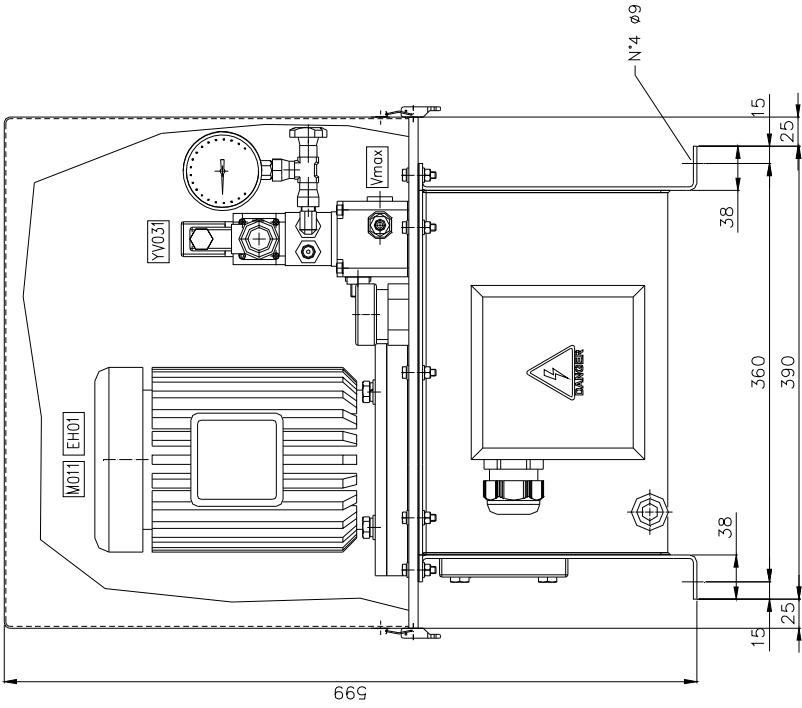
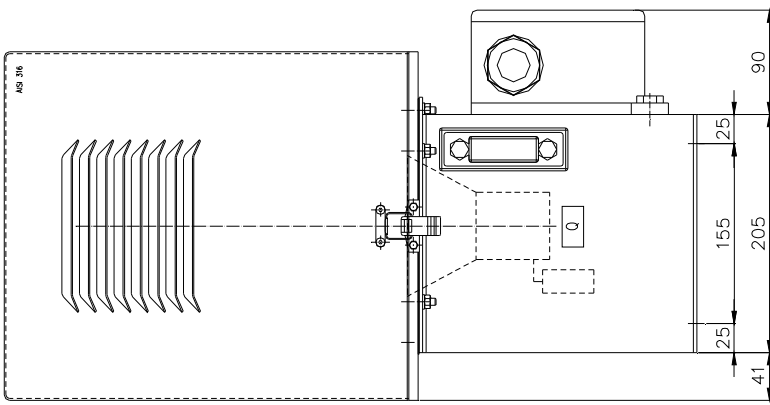
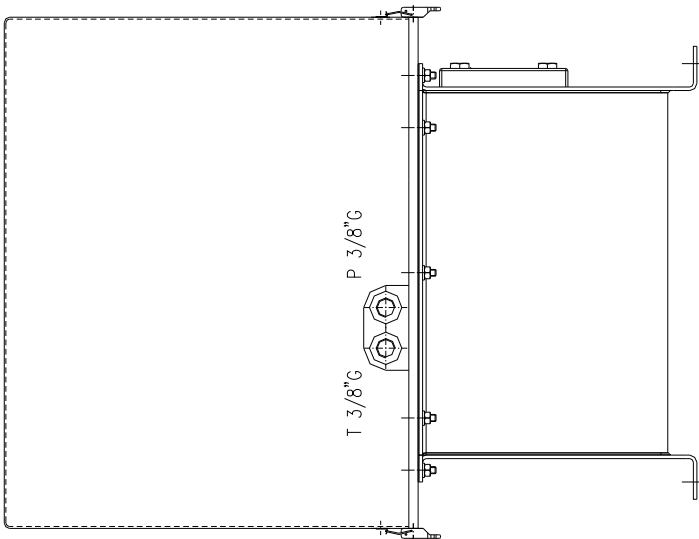
WHEEL WIDTH 170±225 mm
WHEEL DIAMETER 170±225 mm



Rima S.r.l.
Via Fermi 255 – 21042 Caronno Pertusella (Va) Italy
Phone: +39 02 9650694 – Fax +39 02 9657860
E-mail: rima@rimagroup.com



WWW.RIMAGROUP.COM



OIL TYPE : HLP ISO VG 15

ELECTRIC MOTOR	1.5 kW, 400V-50Hz
GEAR PUMP	5 l/min
ELECTROVALVE	24 V DC
PRESSURE RELIEF VALVE	20 MPa

HYDRAULIC UNIT TYPE SCI-FR-01 FOR ALL TYPE OF WHEEL BRAKES



Rima S.r.l.
 Via Fermi 255 – 21042 Caronno Pertusella (Va) Italy
 Phone: +39 02 9650694 – Fax +39 02 9657860
 E-mail: rima@rimagroup.com



WWW.RIMAGROUP.COM