

RAIL BRAKE TP



DETAILS

MAIN FEATURES

- Rail brake
- Installation: upper flange
- Horizontal float = ± 25 mm (depending on rail type)
- Opening time (signal for operation) see drawings
- Vertical float see drawings
- Closing time = adjustable from 4 to 16 s
- Hydraulic unit supplied separately
- Standard painting = 240 micron, RAL 5019
- Inductive limit switch for signals "brakes open"
- Suitability to operate on rail with flat or curved top surface
- Removal emergency device
- Emergency Manual opening device

OPTIONS

- Hand Pump
- Working temperature different from standard (-20° $+40^{\circ}$)
- Manufacturing according Q.C.P. different from our standard
- Suitability to double rail
- Electrical board (on plate or box IP55)
- Pressure switch to signal "brakes open" (instead of limit switch)

APPLICATIONS

Rail brakes, suitable for medium forces from 130 to 500 kN (securing cranes against the wind force) work pressing

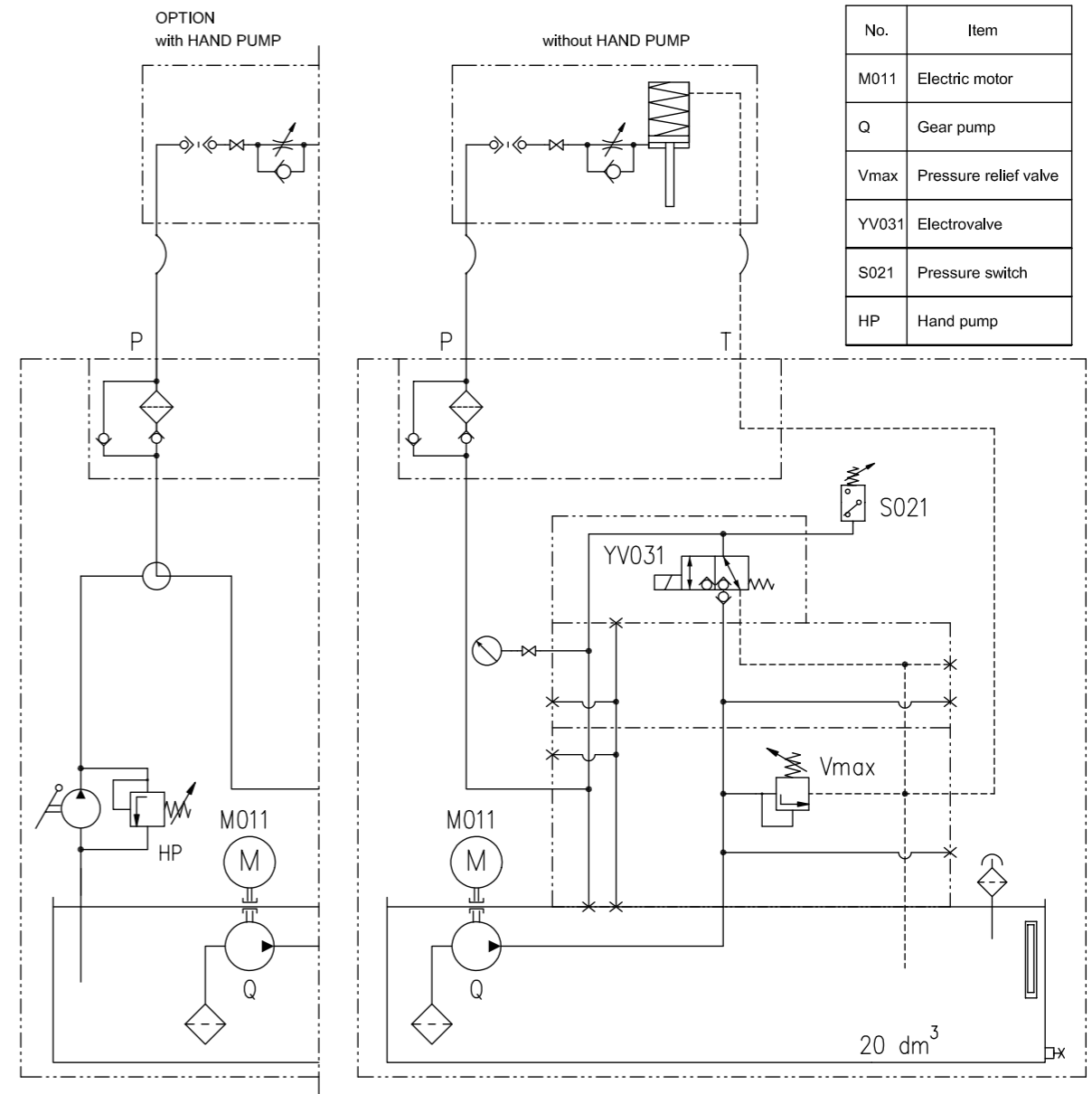
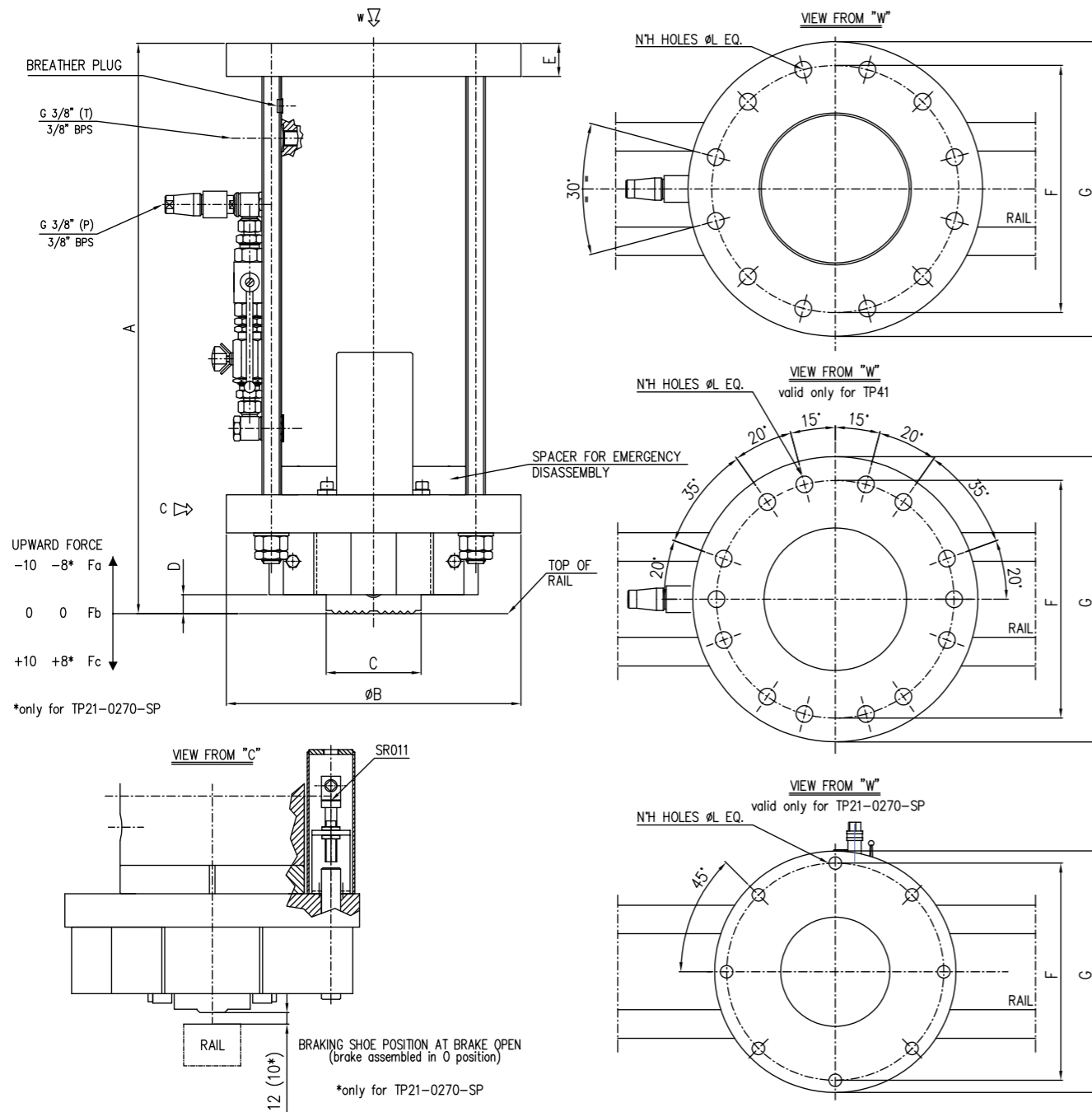
down on the top of rail by disk springs. Brakes are hydraulically released. Usual parking utilisation requires a few closing/

opening cycles per day. They are usually installed in the middle of crane gantry travel (One or two per crane corner).

OPERATING RESTRICTIONS

Brake shoes of our rail brakes have been designed to work on common market rails whose hardness is between 200 and 270

HB (= 700 to 900 N/mm²). The certification of TUV are referred to above given values of rail hardness.



No.	Item
M011	Electric motor
Q	Gear pump
Vmax	Pressure relief valve
YV031	Electrovalve
S021	Pressure switch
HP	Hand pump

Type	UPWARD PUSHING FORCE (kN)			HOLDING FORCE (kN) Position "0"	CONNECTION SCREWS CLASS 10.9 TO BE FORESEEN										Weight (kg)
	Fa	Fb	Fc		A	B	C	D	E	F	G	H	L		
TP01-0140-01	209	172	131	130	600	310	100	20	35	260	310	12	18	150	
TP11-0215-01	380	290	195	215	700	350	100	20	45	275	350	12	26	225	
TP21-0315-01	560	400	230	300	700	470	180	20	50	350	470	12	30	395	
TP21-0270-SP	546	361	162	270	623	470	180	15	50	457	508	8	27	380	
TP31-0375-01	680	500	308	375	750	500	180	20	70	380	500	12	36	510	
TP41-0550-01	874	712	540	500	860	600	270	20	70	500	600	14	36	810	

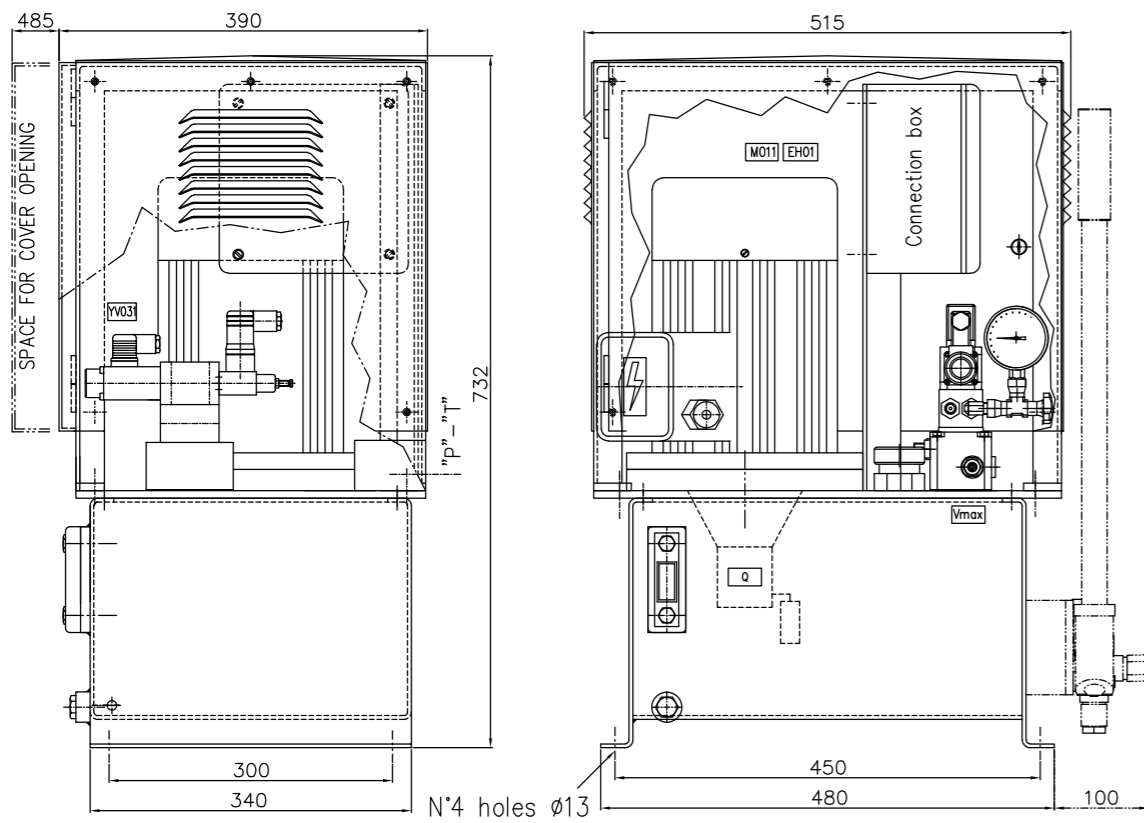
Type of brake	CALIBRATION	
	Pressure relife valve	Pressure switch
TP01	17 MPa	↑15-13↓MPa
TP11	24 MPa	↑21,5-20↓MPa
TP21	24 MPa	↑21,5-20↓MPa
TP31	21 MPa	↑18,5-17↓MPa
TP41	21 MPa	↑18,5-17↓MPa

Type	* M011 (kW) 400V-50Hz	Q (l/min) (cm ³ /rev)	Vmax (MPa)	S021 (MPa)	* YV031	P-T	Weight without HP (kg)	Weight with HP (kg)	OPENING TIMES (s) (suitable for one brake)				
									TP-01-01	TP-11-01	TP-21-01	TP-31-01	TP-41-01
SCI-TP10-5-01	1,5	4,5 3,2	21	19-18	24 VDC-30W	G3/8"	60	65	2,2	2,8	4,5	6	7,5
SCI-TP-20-7,5-S-01	3	7 4,8	21	19-18	24 VDC-30W	G3/8"	75	80	1,4	1,7	2,7	3,7	4,7

* = OTHER FEEDING VOL TAGE ON REQUEST

OTHER OPENING TIMES ON REQUEST

SCI-TP-20-7.5-S-01



SCI-TP10-5-01

