

RAIL CLAMP SELF-BLOCKING TYPE TA



DETAILS

MAIN FEATURES

- Rail clamp self-blocking type
- Minimize the friction contacts and consequently the rail guides wear
- Wide gap between rail guides and rail
- Installation: Bolted side flange
- Vertical float = ± 12 mm
- Horizontal float = ± 40 mm
- Tolerance respect to nominal width of the rail = ± 1.5 mm (or more upon request)
- Opening time (signal for operation) = 4 s
- Closing time = adjustable from 5 to 18 s
- Duty = 24 hours full operation
- Standard painting = 240 micron, RAL 5019
- Emergency Manual opening device

OPTIONS

- Hand Pump
- Working temperature different from standard (-20° , $+40^{\circ}$)
- Double side flanges or upper flange (with hydraulic unit supplied separately from rail clamps)
- Hydraulic unit suitable to operate with more than one rail clamps
- Electrical board (on plate or box IP55)
- Limit switch which signals „rail clamps closed“
- Horizontal and vertical clearance increased
- Security side stowage pins
- Manufacturing according Q.C.P. different from our standard
- Language of documentation different from standard
- Certificates of materials (EN 10204-2.2, EN 10204-3.1 o EN 10204-3.2) for all main components

APPLICATIONS

As storm brakes the self-blocking rail clamp even in working position starts really to work, pressing the rail sides, only

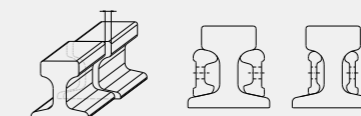
if the wind force overcomes the gantry brakes capacity. When this happens and the crane tends to move, the rail clamps

pressing on the rail sides with a force proportional to the wind force deducted the gantry brakes force.

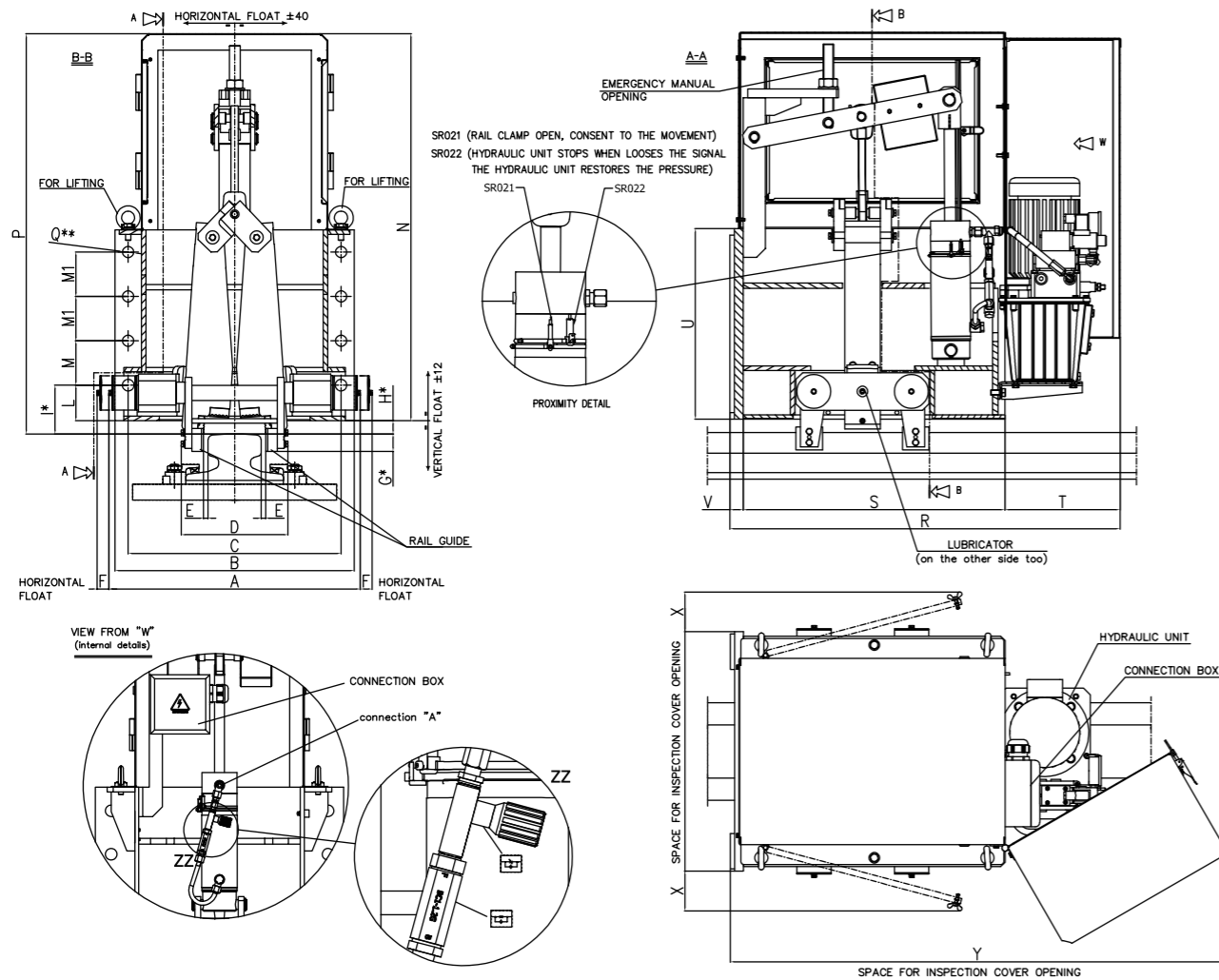
OPERATING RESTRICTIONS

Braking shoes of our rail clamp are suitable to work on rails commonly on the market whose hardness is between 200 and 270 HB (= 70 to 90 daN/mm²). The certification of TUV are referred to above given values of rail hardness. In case of different values we must be informed at order, because this could affect the rail clamp functioning.

Max misalignment of 1mm



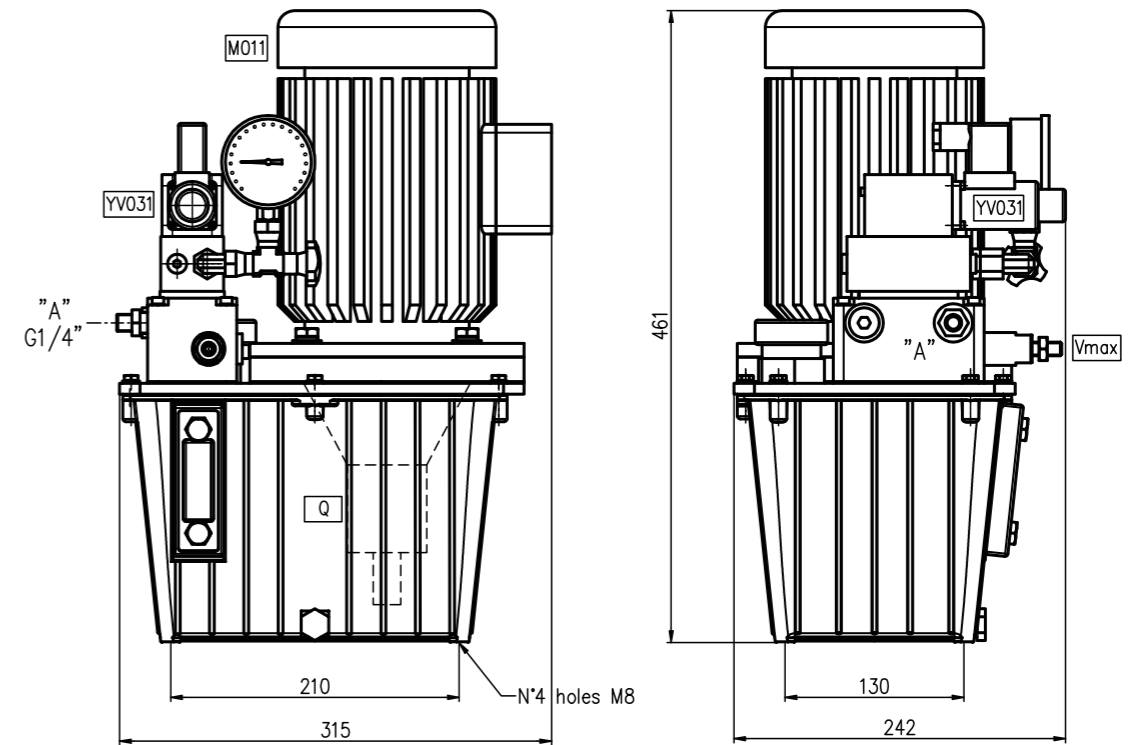
Presence and shape of eventual Fish plates (rail joints) must be communicated (this could impede the regular functioning of rail clamps).



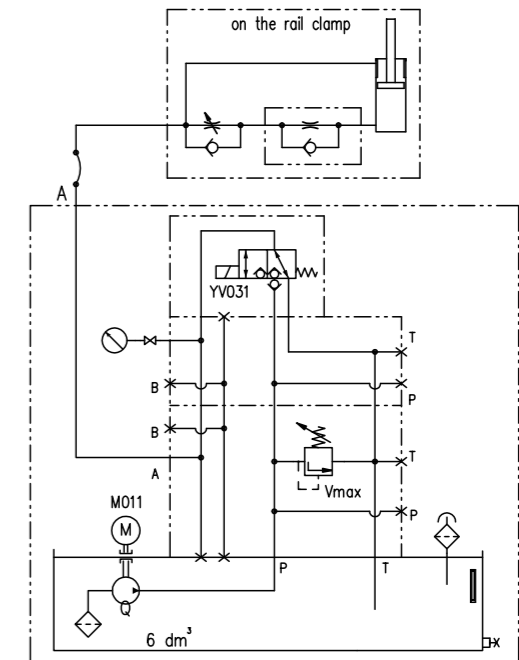
NOTE: ALL THE PROTECTION PANNELS ARE REMOVABLE
 (*) VARIABLE WITH VERTICAL FLOAT
 (**) CONNECTION SCREWS CLASS : 10.9 ARE TO BE FORESEEN
 FORCES INDICATED IS REFERRED TO MAXIMUM HEAD WIDTH OF RAIL 130 mm.
 FOR WIDER RAILS PLEASE CONTACT OUR TECHNICAL OFFICE.

| Type | Holding Force (kN) | A | B | C | D | E | F | G | H | I | L | M | M1 |
|--------------|--------------------|------|-----|-----|-----|----|----|----|----|-----|-----|-----|-----|
| TA20-0250-03 | 250 | 567 | 540 | 480 | 241 | 10 | 40 | 40 | 30 | 110 | 80 | 100 | 100 |
| TA30-0400-03 | 400 | 640 | 630 | 550 | 251 | 10 | 40 | 40 | 30 | 110 | 80 | 110 | 110 |
| TA40-0700-03 | 700 | 700 | 700 | 605 | 273 | 10 | 40 | 40 | 30 | 120 | 90 | 120 | 120 |
| TA50-1000-03 | 1000 | 858 | 770 | 655 | 293 | 10 | 40 | 40 | 30 | 120 | 90 | 130 | 130 |
| TA60-1500-03 | 1500 | 1038 | 930 | 800 | 416 | 10 | 40 | 45 | 30 | 145 | 115 | 205 | 150 |

| Type | N | P | Q** | R | S | T | U | V | X | Y | Weight (kg) |
|--------------|------|------|---------------|------|------|-----|-----|----|-----|------|-------------|
| TA20-0250-03 | 873 | 903 | N°8 Ø26 (M24) | 880 | 620 | 260 | 430 | 30 | 480 | 1120 | 360 |
| TA30-0400-03 | 960 | 990 | N°8 Ø30 (M27) | 955 | 695 | 260 | 470 | 30 | 560 | 1200 | 450 |
| TA40-0700-03 | 1062 | 1092 | N°8 Ø36 (M33) | 1025 | 765 | 260 | 510 | 35 | 630 | 1330 | 660 |
| TA50-1000-03 | 1062 | 1092 | N°8 Ø42 (M39) | 1135 | 875 | 260 | 550 | 45 | 720 | 1500 | 890 |
| TA60-1500-03 | 1213 | 1243 | N°8 Ø52 (M48) | 1300 | 1065 | 235 | 710 | 45 | 750 | 1740 | 1550 |



| No. | Item |
|-------|-----------------------|
| M011 | Electric motor |
| Q | Gear pump |
| Vmax | Pressure relief valve |
| YV031 | Electrovalve |



| Type | * M011 (kW) | Q (l/min) (cm³/rev) | Vmax (MPa) | * YV031 | P | Weight (kg) |
|-------------|-------------------|---------------------|------------|------------|-------|-------------|
| SCI-TA06-02 | 0,75 400V-50Hz | 2,3 1,6 | 20 | 24V DC-30W | G1/4" | 28 |

* = OTHER FEEDING VOLTAGE ON REQUEST
 HYDRAULIC UNIT FOR ALL TYPE OF SELF BLOCKING RAIL CLAMPS